



NEW
Cable free
now at 26 mm

SELECTOSPRAY® **Electric Valve** **Roll Cooling Systems**



SELECTOSPRAY® – ELECTRIC ROL

SELECTOSPRAY® from Lechler

The demand for cost effective production, pushes all parameters in the rolling process. The requirements for product rolled at ever increasing rolling speeds and reductions, presents complex technical challenges.

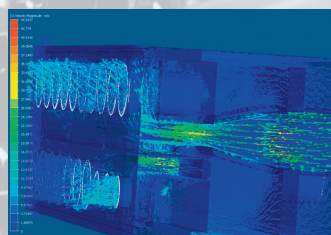
Lechler SELECTOSPRAY® Systems present a performance advantage to improve all aspects of the roll cooling process.

Efficient use of available coolant, through optimised spray positions increases the cooling effect per litre of coolant.

Eliminating cost from the rolling process is all part of the SELECTOSPRAY® experience.

Key features of a SELECTOSPRAY® system are:

- CFD design of header and valves, to optimise flow and reduce pressure losses



- Very robust and reliable construction of headers, valves, nozzles, hoses and cabinets

SELECTOSPRAY® Benefits

- Significantly improves rolled product flatness
- Contributes to extended work roll life
- Efficient application reduces applied volumes
- Reduces costs of coolant recovery

Lechler Electric Valves – Robust, Reliable, Simple

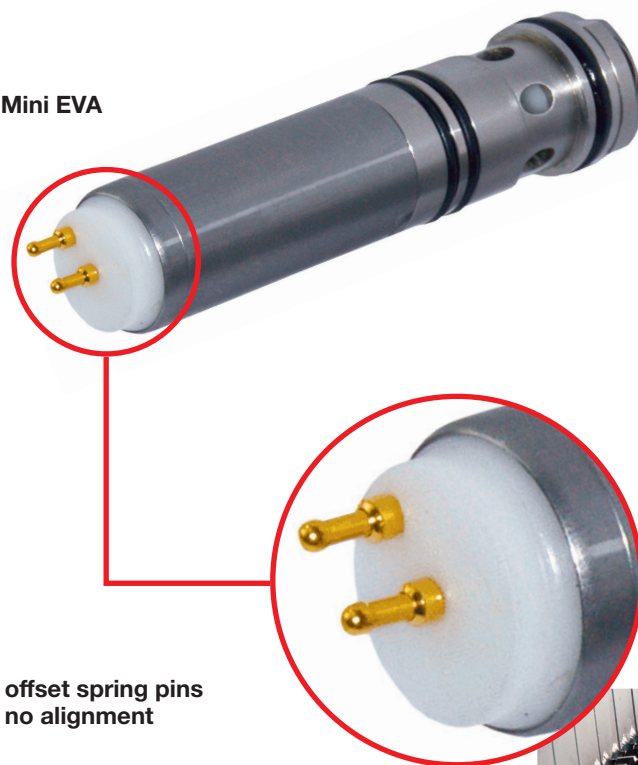
- Contamination tolerant
- No control air required
- Large orifices – high flow
- Completely removable from the header front
- Quick response time, suitable for pulsing

Cable Free – Electric Valves

52 mm EVA

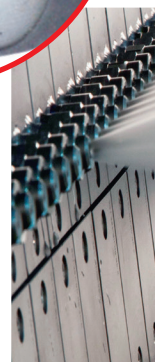


26 mm Mini EVA



Unique offset spring pins
require no alignment

- Reduced costs with less maintenance
- No cables = no electrical damage during valve removal

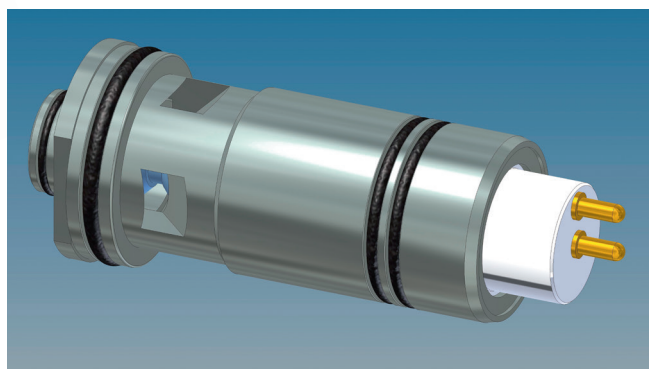


L COOLING SYSTEMS

EVA Quick Connect 52 mm / 2" with Offset Pins

Product code
961.EVA.CS.QC.OP.0

- Cable free – no wires
- No orientation required
- 5 Hz pulsing
- 159 l/min



The Lechler EVA (Electric Valve Actuation) is used in rolling mills where inflammable rolling oil or kerosene is used as a coolant

In applications such as aluminium cold or foil mills, there is the demand for valves that have the built-in function to fail closed. In the event of an emergency or a mill fire, the risk of prolonging the hazard is reduced if the flow the inflammable coolant is halted.

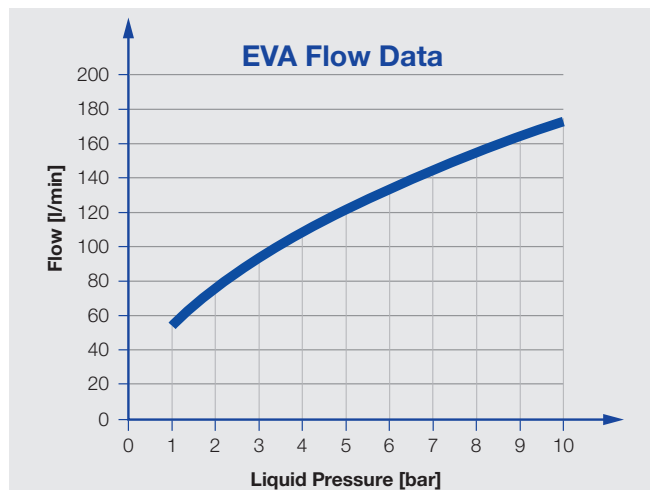
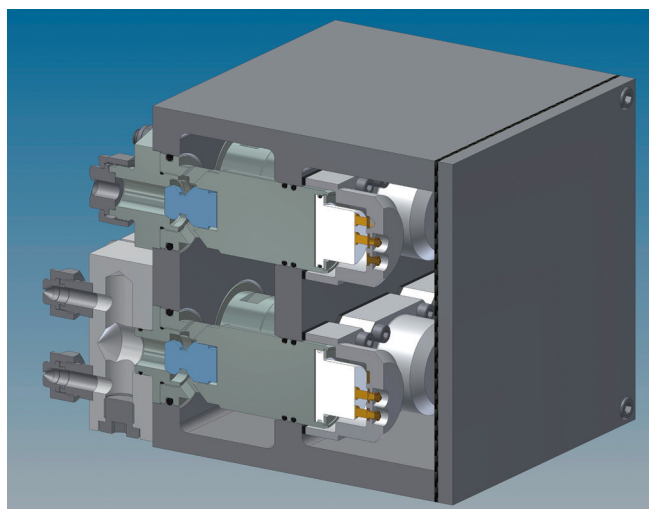
The Lechler EVA valve has this feature. When coupled with the fact that it does not require compressed air to operate, it fulfils all the demands, both functional and commercial, of a modern rolling facility.

Features

- Completely cable free
- Self-aligning, ensuring a perfect connection every time
- Class leading flow capability
- Pulse rate up to 5Hz
- Operating typically at 52 mm centres (50 mm optional)
- Stainless steel construction
- Long life and easy to maintain
- Can be fitted with nozzle blocks or the Lechler SELECTOSPRAY® nozzle range

Advantages

- No control air required
- Large orifices for a laminar flow and a stable spray pattern, providing effective and precise roll cooling
- Easily and completely removable from the front of the header
- No requirement to remove the header from the mill window

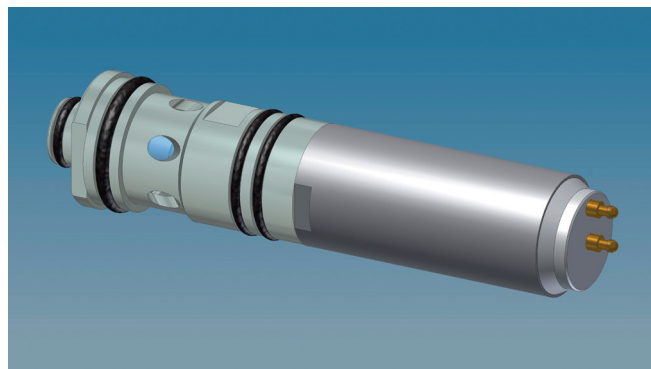


Maximum valve flow table (other flows are available with the correct Lechler nozzle selection)

Mini EVA Quick Connect 26 mm / 1" with Offset Pins

Product code
961.EVA.MM.QC.00.0

- Cable free – no wires
- No orientation required
- 5 Hz pulsing
- 59 l/min



The Lechler Mini EVA (Electric Valve Actuation) is used in rolling mills where inflammable rolling oil or kerosene is used as a coolant

The Mini EVA valve encompasses the same design principles as the 52 mm EVA valve with the built-in function to fail closed. The Mini EVA has a class leading flow rate for a 26 mm envelope. This enables Lechler Engineers to design low aspect roll cooling headers allowing the optimum positioning of the header inside the mill window.

The compact Lechler Mini EVA valve is proven to be the ideal solution for the following applications:

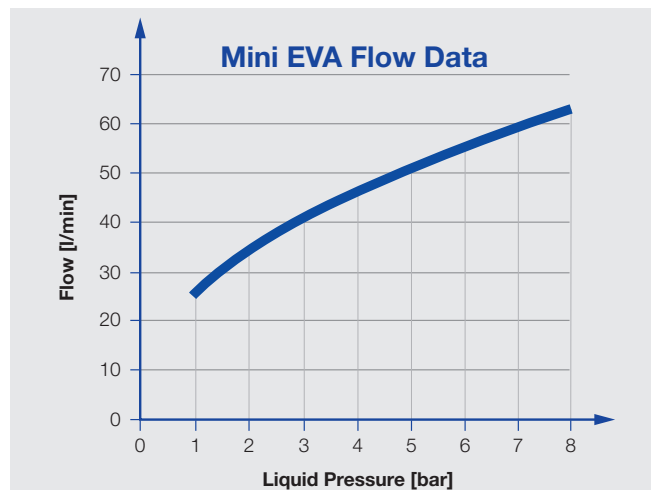
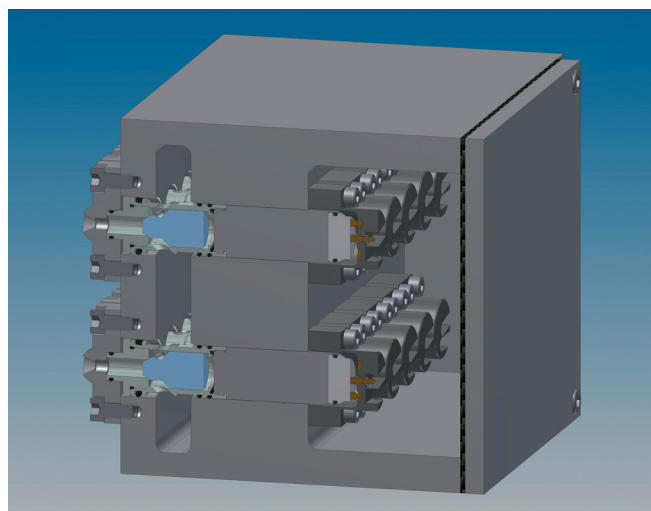
- Roughing foil mills
- Foil mills
- Other mills that require increased edge spray resolution
- Hot edge sprays (HES) up to 120 °C max

Features

- Completely cable free.
- Self aligning, ensuring a perfect connection every time
- Class leading flow capability
- Pulse rate up to 5Hz
- Operating typically at 26 mm centres (25 mm optional)
- Stainless steel construction
- Long life and easy to maintain
- Can be fitted with nozzle blocks or the Lechler SELECTOSPRAY® nozzle range

Advantages

- No control air required
- Large orifices for a laminar flow and a stable spray pattern, providing effective and precise roll cooling
- Easily and completely removable from the front of the header
- No requirement to remove the header from the mill window



Maximum valve flow table (other flows are available with the correct Lechler nozzle selection)



SELECTOSPRAY® – Your Competitive Advantage

Characteristics

The benefits to you

Bespoke Nozzle Design

- Perfect spray coverage
 - Optimised coolant usage
- Precise spray patterns
 - Reduced running costs

Electric Operation

- No compressed air
 - Fast response 20 ms
 - Low power coils
 - Pulsing up to 5 Hz
- Reduced running costs
 - Improved product quality
 - Reduced running costs
 - Large flow ranges available
 - Increased productivity
 - Can be used for HES (Hot Edge Spray)

Pinned Connections

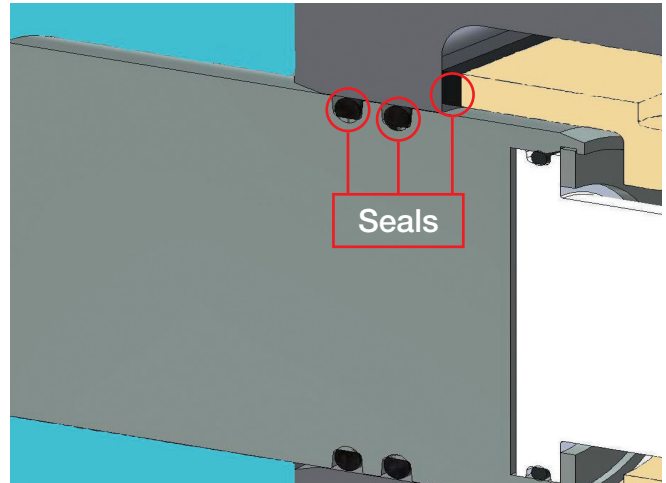
- Valve alignment not required
 - Cable free
- Less maintenance
 - Reduced risk of valve damage

Compact Dimensions

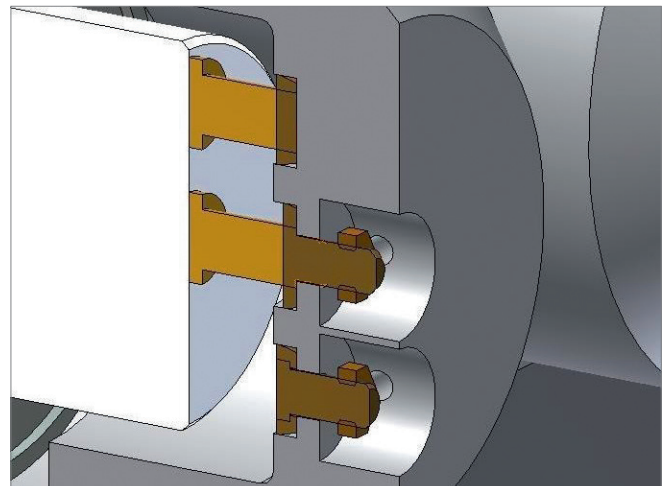
- Low section headers
 - Small diameter valves
- Optimised positioning
 - Increased cooling efficiency
 - Can be closely grouped (26 mm)

Reliability

- Tested to 20 million cycles
- Reduced running costs
 - Easy maintenance



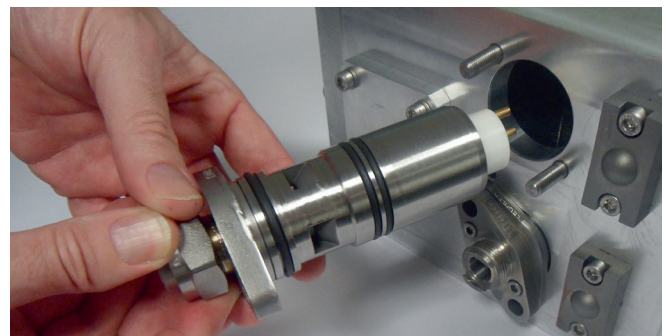
The coolant ■ is completely isolated from the electrical chamber by three seals



The unique cable free quick connection requires no alignment and ensures maximum system availability

Competitive Advantages

- Easy maintenance
- Quick change
- Removable from the front of the header
- No requirement to remove the headers for servicing
- Lower maintenance costs
- Class leading flow rates



Totally serviceable from the header front



Lechler Ltd.
1 Fell Street
Newhall
Sheffield S9 2TP / United Kingdom
Phone: (0114) 2492020
Fax: (0114) 2493600

E-Mail: info@lechler.com
Internet: www.lechler.co.uk



Headquarters Germany: Lechler GmbH · Ulmer Strasse 128 · P.O. Box 13 23 · 72544 Metzingen · Phone: +49 7123 9620 · Fax: +49 7123 962333 · info@lechler.de
Belgium: Lechler S.A./N.V. · Avenue Mercatorlaan, 6 · 1300 Wavre · Phone: +32 10 225022 · Fax: +32 10 243901 · info@lechler.be
China: Lechler Intl. Trad. Co. Ltd. · Beijing · Rm. 418 Landmark Tower · No. 8 Dong San Huan Bei Lu · Phone: +86 10 84537968, Fax: +86 10 84537458 · info@lechler.com.cn
Finland: Lechler Oy · Jäspilänkatu 18 · 04360 Kerava · Phone: +358 207 856880 · Fax: +358 207 856881 · info@lechler.fi
France: Lechler France, S.A. · Bât. CAP2 · 66-72, Rue Marceau · 93558 Montreuil cedex · Phone: +33 1 49882600 · Fax: +33 1 49882609 · info@lechler.fr
India: Lechler (India) Pvt. Ltd. · Plot B-2 · Main Road · Waggle Industrial Estate · Thane (W) · 400604 · Phone: +91 22 40634444 · Fax: +91 22 40634497 · lechler@lechlerindia.com
Sweden: Lechler AB · Kungsängsvägen 31 B · 753 23 Uppsala · Phone: +46 54 137030 · Fax: +46 54 137031 · info@lechler.se
Spain: Lechler S.A. · Avda. Pirineos 7 · Oficina B7, Edificio Inbisa I · 28700 San Sebastián de los Reyes, Madrid · Phone: +34 91 6586346 · Fax: +34 91 6586347 · info@lechler.es
USA: Lechler Inc. · 445 Kautz Road · St. Charles, IL. 60174 · Phone: +1 630 3776611 · Fax: +1 630 3776657 · info@lechlerUSA.com